



GAT MONTHLY MEMBERSHIP PROGRESS REPORT

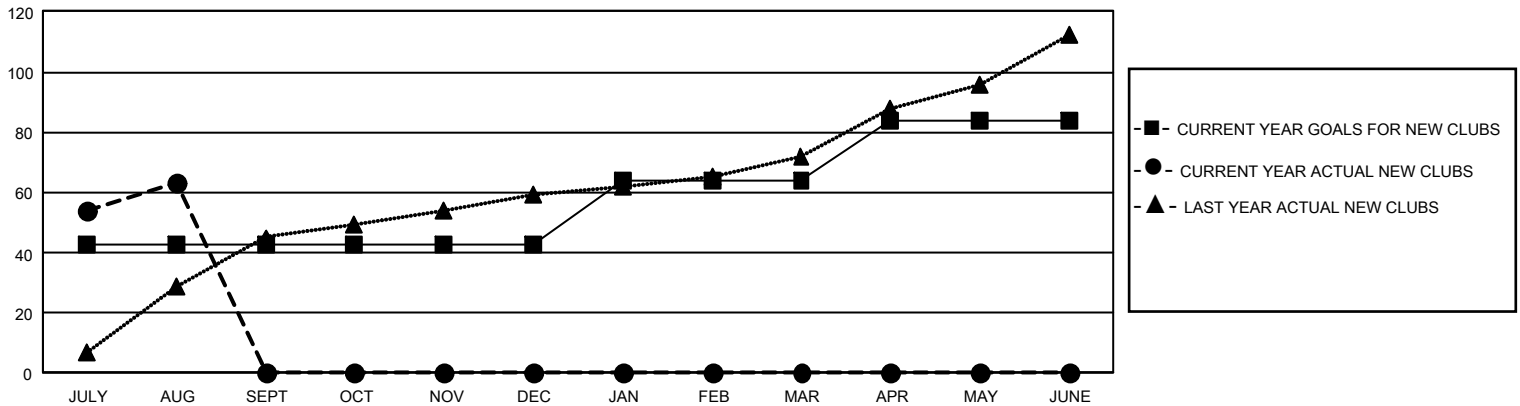
Results as of: 8/31/2025

GMT Constitutional Area 6 - I, Group F

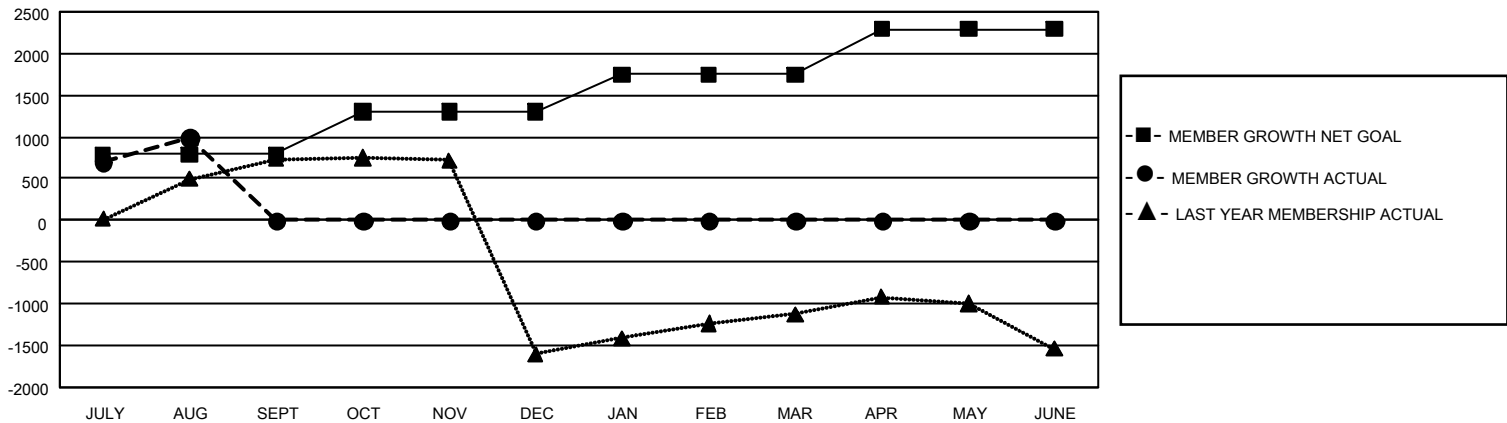
REPORT DOES NOT INCLUDE CLUBS IN UNDISTRICTED AREAS.

Clubs				Members			
RESULTS FOR 2025-2026				RESULTS FOR 2025-2026			
QUARTER	NEW CLUB GOAL	NEW CLUBS	DROPPED CLUBS	QUARTER	MEMBER GROWTH NET GOAL	MEMBER GROWTH ACTUAL	DROPPED MEMBERS ACTUAL (including transfers)
JULY/AUG/SEPT	129	63	3	JULY/AUG/SEPT	790	2,307	1,107
OCT/NOV/DEC	0	0	0	OCT/NOV/DEC	515	0	0
JAN/FEB/MAR	63	0	0	JAN/FEB/MAR	442	0	0
APR/MAY/JUNE	60	0	0	APR/MAY/JUNE	545	0	0

GOALS AND ACTUAL NEW CLUBS CUMULATIVE



GOALS AND ACTUAL MEMBERS CUMULATIVE



DROPPED CLUBS: 3

309 CLUBS OF 1,237 ADDED 1 OR MORE NEW MEMBERS

GENDER DISTRIBUTION

MALE	22,801 (72.97%)
FEMALE	8,438 (27.00%)
NON BINARY	0 (0.00%)
PREFER NOT TO ANSWER	10 (0.03%)

DROPPED MEMBERS

DECEASED	10
CLUB CANCELLED	37
OTHER	1,055
TOTAL	1,102

[CLICK HERE FOR CUMULATIVE MEMBERSHIP DATA](#)

TOTAL FAMILY UNIT MEMBERS 11,453

FAMILY MEMBERS PAYING HALF DUES 6,936